

concaawe



An Introduction to CONCAWE: *How is CONCAWE Organised?*

Pete Roberts
Technical Coordinator
Air Quality

14th March, 2011

CONservation of

Clean

The Oil Companies' European association for health, safety and environment in refining and distribution

Air and

(founded in 1963)

Water in

Europe

- Fuel Quality and Auto Emissions
- Air Quality
- Water/Soil Quality & Waste
- Oil Pipelines
- Safety
- Refinery Technology Support
- Health Science
- Petroleum Products
- Risk Assessment
- REACH & GHS

Reproduction permitted
with due acknowledgement



- ▶ Open to companies owning refining capacity in Europe
- ▶ Currently 41 Members and Associates*
 - ▶ Representing ~100% of European refining capacity

AlmaPetroli

APC

api

BP

CEPSA

Chevron

ConocoPhillips

ENI

ERG

ExxonMobil

Galp Energia

Hansen & Rosenthal

Hellenic Petroleum

INA*

INEOS

IPLOM

Koch

KPI

LOTOS

LUKOIL

LyondellBasell

MOL

Motor Oil (Hellas)

Murco

Neste Oil

Nynäs

OMV

Petroplus

PKN Orlen

Preem

Repsol

RHG

Rompetrol

SARA

SARAS

Shell

SRD

Statoil

St1

Tamoil

TOTAL

- ▶ CONCAWE work is >98% funded by Member Companies



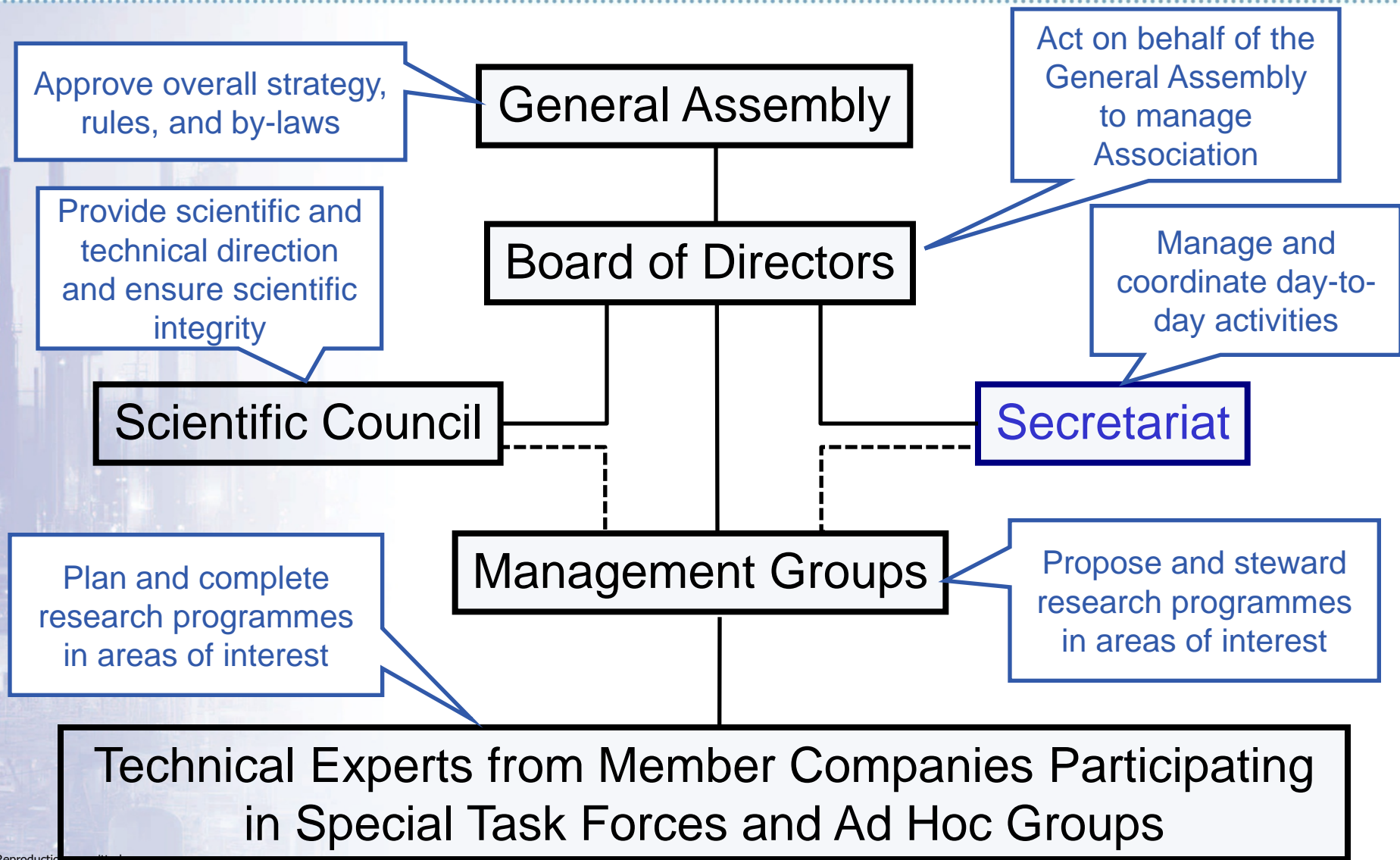
- ▶ Established as a European association for completing quality research on health, safety, and environmental (HS&E) issues of importance to the European oil refining industry
- ▶ Objectives (as per statutes):
 - ▶ Acquire adequate scientific, economic, technical, and legal information on HS&E issues
 - ▶ Improve the understanding of these issues by the industry, authorities, and consumers
- ▶ CONCAWE promotes three operating principles:
 - ▶ Sound science
 - ▶ Cost-effectiveness of technical options
 - ▶ Transparency of results
 - ▶ Our research reports are available at www.concaawe.org
- ▶ CONCAWE also supports advocacy efforts of EUROPIA
 - ▶ *EUROpean Petroleum Industry Association*



- ▶ Full understanding of scientific and economic factors
- ▶ Rational, logical approach to HS&E issues
- ▶ Reliance on member companies' expertise and data
- ▶ Dialogue and cooperation within scientific community and technical organisations (CEN, CEC, CRC, HEI...)
- ▶ Recognized technical and scientific integrity
 - ▶ Observer/liaison status within WHO, UN-ECE, ...
- ▶ Partner with technical experts on problems of mutual interest
E.g. in the Fuels Quality and Emissions focus area:
 - ▶ JEC Well-to-Wheels (WTW) studies
 - ▶ Joint Research Centre (JRC)
 - ▶ European Council for Automotive R&D (EUCAR)
 - ▶ FP7 and direct-funded Consortia

Reproduction permitted
with due acknowledgement





Reproduction permitted with due acknowledgement



- ▶ **CONCAWE Secretary General**
Michael Lane (michael.lane@concaawe.org) +32 2 566 9161
- ▶ **Air Quality**
Pete Roberts (pete.roberts@concaawe.org) +32 2 566 9171
- ▶ **Fuel Quality and Emissions**
Ken Rose (ken.rose@concaawe.org) +32 2 566 9169
- ▶ **Health Science and REACH**
Gary Minsavage (gary.minsavage@concaawe.org) +32 2 566 9163
- ▶ **Petroleum Products and REACH**
Bo Dmytrasz (bo.dmytrasz@concaawe.org) +32 2 566 9165
- ▶ **Refinery Technology**
Alan Reid (alan.reid@concaawe.org) +32 2 566 9167
- ▶ **Safety and Oil Pipelines**
Klaas den Haan (klaas.denhaan@concaawe.org) +32 2 566 9183
- ▶ **Water/Soil Quality and Waste**
Klaas den Haan (klaas.denhaan@concaawe.org) +32 2 566 9183
- ▶ **REACH Implementation/SIEFs management**
Sophie Bornstein (sophie.bornstein@concaawe.org) +32 2 566 91 68
- ▶ info@concaawe.org (general email contact)
- ▶ www.concaawe.org (web site)



- ▶ On your memory stick:
 - ▶ Presentations from this pre-Session
 - ▶ How is CONCAWE organized?
 - ▶ How does CONCAWE work?
 - ▶ What does CONCAWE accomplish? A Case Study
 - ▶ Where is CONCAWE going next? Preview of the 'Future of CONCAWE' Study
 - ▶ CONCAWE Profile
 - ▶ Including Member Companies and CONCAWE Secretariat contacts
 - ▶ CONCAWE's guide to frequently used acronyms
- ▶ After this Symposium:
 - ▶ www.concaawe.org for CONCAWE reports and events
 - ▶ Access 'RSS feed' from the website for new publications
 - ▶ CONCAWE *Review*, two times per year

Reproduction permitted
with due acknowledgement

